



Located on ten secluded acres... the hardest thing you will ever have to do is leave.



Reservations

Contact our Reservations Department on Maui, visit our website to book online or call your Travel Agent.

**TOLL FREE USA and CANADA
800-367-5030**

Monday - Friday
7:00am - 4:30pm Hawaii Time

Saturday - Sunday
7:00am - 2:00pm Hawaii Time

Email: stay@napilikai.com

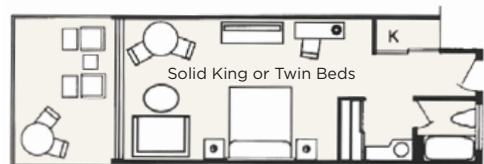
View our webcam:
www.napilikai.com

5900 Lower Honoapiilani Road
Lahaina, Hawaii 96761
808.669.6271



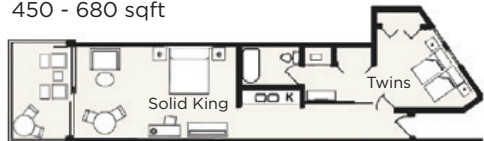


All Rooms, Lanais & Buildings are Non-Smoking

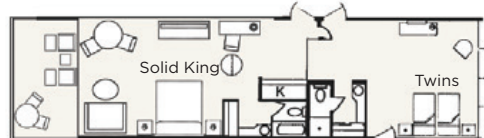


Studio

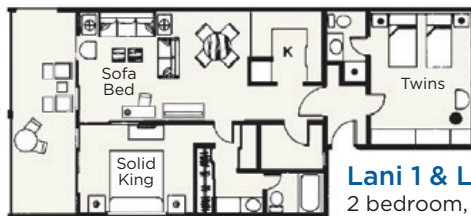
Studio 1 room, 1 bath, kitchen
450 - 680 sqft



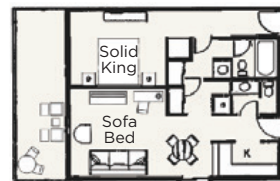
Honolua 1 bedroom, 1 bath, kitchen
Lahaina similar 575 - 685 sqft



Aloha & Puna 2 1 bedroom, 2 bath,
kitchen • 830 - 870 sqft



Lani 1 & Lani 2
2 bedroom, 2 bath,
kitchen • 1560 sqft



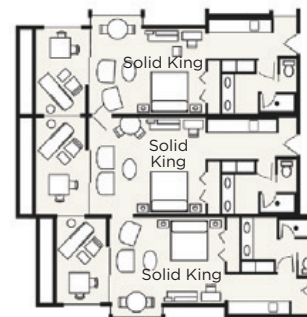
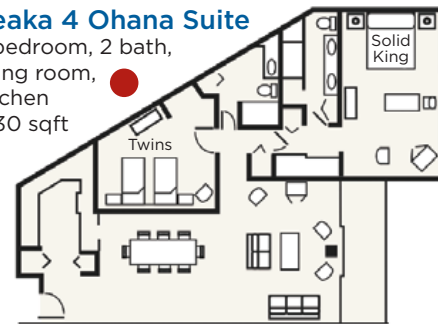
Lani 1, Lani 2
1 bedroom, 2 bath,
kitchen • 960 sqft



Puna Point 1 bedroom, 2 bath, kitchen • 865 sqft

Keaka 4 Ohana Suite

2 bedroom, 2 bath,
living room,
kitchen
1930 sqft



Keaka 3 3 room,
3 bath, living room,
kitchen • 2040 sqft

*Note: Can also
be sold as a 2
room, 2 bath suite
with kitchen or
as a single family
studio.*

Note: Floor plans not to scale. Square footage includes lanai and is approximate. Color legend matches rate sheet insert.

2024 Room Rates

Garden View Keaka 4	2024	2024-25 Holiday 12/20/24 -1/3/25
Hotel Room	\$390	\$490
Family Studio	\$485	\$585
2 Room Keaka Suite (2 Hotel Rooms)	\$780	\$980
2 Room Keaka Suite (1 Studio & 1 Hotel Room)	\$875	\$1,075
2 Room Keaka Suite (2 Studios)	\$970	\$1,170
3 Room Keaka Suite (2 Hotels & 1 Studio)	\$1,265	\$1,565
3 Room Keaka Suite (1 Hotel & 2 Studios)	\$1,360	\$1,660
Ohana Suite (2 Bedroom)	\$1,335	\$1,635
Ocean View Aloha, Lani 2, Keaka 1, 2 & 3	2024	2024-25 Holiday 12/20/24 -1/3/25
Hotel Room	\$495	\$595
Studio	\$575	\$675
Family Studio	\$605	\$705
1 Bedroom Suite	\$845	\$1,045
2 Bedroom Suite	\$1,285	\$1,585
2 Room Keaka Suite (1 Studio & 1 Hotel Room)	\$1,100	\$1,300
2 Room Keaka Suite (2 Studios)	\$1,210	\$1,410
3 Room Keaka Suite (2 Studios & 1 Hotel Room)	\$1,705	\$2,005
3 Room Keaka Suite (3 Studios)	\$1,815	\$2,115
Beachfront Lahaina & Honolulu	2024	2024-25 Holiday 12/20/24 -1/3/25
Studio	\$625	\$725
1 Bedroom Suite	\$875	\$1,075
Ocean Front Puna Point, Puna 2, Lani 1	2024	2024-25 Holiday 12/20/24 -1/3/25
Studio	\$745	\$845
1 Bedroom Suite	\$1,035	\$1,235
2 Bedroom Suite	\$1,600	\$1,900



NAPILI KAI BEACH RESORT

Resort & Room Amenities

- No Resort Fees
- Free Parking
- Large Private Lanais
- Kitchenette or Kitchen in Studios & Suites
- Compact Refrigerators & Microwaves in Hotel Rooms
- Daily Maid Service
- Blu-ray or DVD/CD Player
- Complimentary WiFi in All Rooms
- Complimentary WiFi & Internet Kiosk in Lobby
- ADA Accessible Rooms
- Coin Operated Laundry Facilities
- A/C & Ceiling Fans in All Rooms
- Coffee & Coffee Maker
- In-Room Safe
- Complimentary Portable Cribs
- Daily Cultural Demonstrations
- Concierge Services
- Full-Service Restaurant with Kids Eat Free Program
- Poolside Snack Bar
- Seasonal Children's Activities
- 18-Hole Adult Putting Green
- 9-Hole Children's Putting Green
- Fitness Center
- Meeting Facilities

General Information

All rates subject to change without notice. Specific building, location, floor, or room number, are not guaranteed. A Premium of \$350 for a hotel room or studio, or \$450 for a suite will guarantee specific building, location, floor, or room number. Premiums are payable in advance, are non-commissionable, non-refundable, non-transferable and will not be applied as a deposit against the daily room rate. Specific building, location, floor, or room number will be a preference only, not guaranteed and based on availability at check-in unless a Premium is paid. Some rooms are privately owned and are not eligible for premium payment until 90 days prior to guest departure date. ADA rooms are available.

Reservations

Contact our In-house Reservations Department 800-367-5030, visit our website www.napilikai.com or contact your travel agent.

Deposit Policy

A two-night deposit is required upon booking. A 14-day notice prior to arrival date is required for revisions and cancellations. Less than 14 days' notice will be subject to forfeiture of two nights' deposit. Reservations for 4 weeks and longer require 7 nights' deposit and a 30-day cancellation/revision notice. Notice of less than 30 days will be subject to 7 night forfeiture of deposit. Family and group deposit policies for 6 or more units will differ.

Holiday Policy

(Subject to change): Seven (7) night minimum for any dates that include December 20 through January 03. A (7) night deposit is due for each accommodation at the time of booking & becomes non-refundable after September 1st. Any date amendments after September 1st that shortens a guest stay by more than (2) nights will be subject to a (2) night penalty which will be charged when the date change is requested and is in addition to the initial deposit. This penalty will not be applied to the final bill but is in addition to the final charges. Packages not available December 20 through January 03.