



Located on ten secluded acres... the hardest thing you will ever have to do is leave.



#### Reservations

Contact our Reservations Department on Maui, visit our website to book online or call your Travel Agent.

**TOLL FREE USA and CANADA  
800-367-5030**

Monday - Friday  
7:00am - 4:30pm Hawaii Time

Saturday - Sunday  
7:00am - 2:00pm Hawaii Time

Email: [stay@napilikai.com](mailto:stay@napilikai.com)

View our webcam:  
[www.napilikai.com](http://www.napilikai.com)

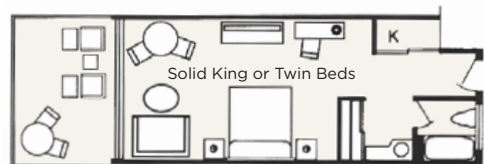
5900 Lower Honoapiilani Road  
Lahaina, Hawaii 96761  
808.669.6271





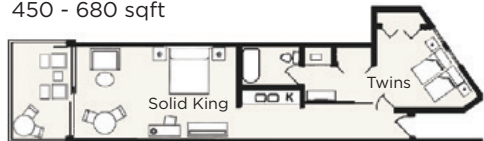


All Rooms, Lanais & Buildings are Non-Smoking

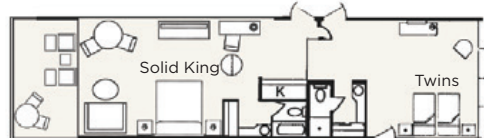


### Studio

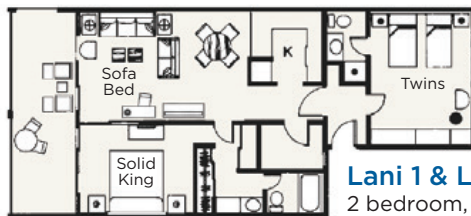
Studio 1 room, 1 bath, kitchen  
450 - 680 sqft



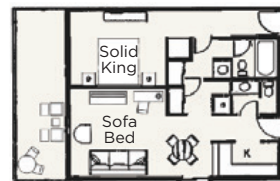
**Honolua** 1 bedroom, 1 bath, kitchen  
**Lahaina similar** 575 - 685 sqft



**Aloha & Puna 2** 1 bedroom, 2 bath,  
kitchen • 830 - 870 sqft



**Lani 1 & Lani 2**  
2 bedroom, 2 bath,  
kitchen • 1560 sqft



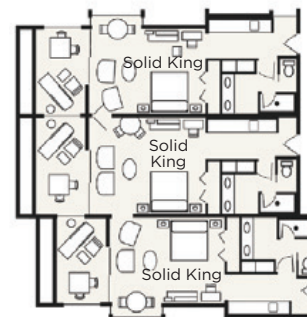
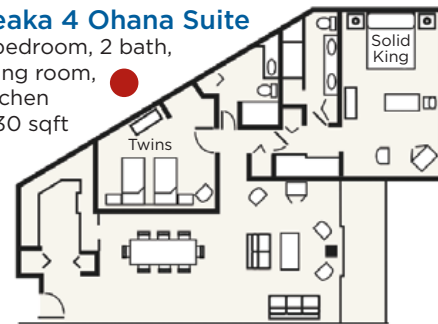
**Lani 1, Lani 2**  
1 bedroom, 2 bath,  
kitchen • 960 sqft



**Puna Point** 1 bedroom, 2 bath, kitchen • 865 sqft

### Keaka 4 Ohana Suite

2 bedroom, 2 bath,  
living room,  
kitchen  
1930 sqft



**Keaka 3** 3 room,  
3 bath, living room,  
kitchen • 2040 sqft

*Note: Can also  
be sold as a 2  
room, 2 bath suite  
with kitchen or  
as a single family  
studio.*

Note: Floor plans not to scale. Square footage includes lanai and is approximate. Color legend matches rate sheet insert.

# 2023 Room Rates

Garden View Keaka 4	2023	2023-24 Holiday 12/20/23 -1/3/24
Hotel Room	\$370	\$470
Family Studio	\$455	\$555
2 Room Keaka Suite (2 Hotel Rooms)	\$740	\$940
2 Room Keaka Suite (1 Studio & 1 Hotel Room)	\$825	\$1,025
2 Room Keaka Suite (2 Studios)	\$910	\$1,110
3 Room Keaka Suite (2 Hotels & 1 Studio)	\$1,195	\$1,495
3 Room Keaka Suite (1 Hotel & 2 Studios)	\$1,280	\$1,580
Ohana Suite (2 Bedroom)	\$1,250	\$1,550
Ocean View Aloha, Lani 2, Keaka 1, 2 & 3	2023	2023-24 Holiday 12/20/23 -1/3/24
Hotel Room	\$470	\$570
Studio	\$535	\$635
Family Studio	\$565	\$665
1 Bedroom Suite	\$790	\$990
2 Bedroom Suite	\$1,200	\$1,500
2 Room Keaka Suite (1 Studio & 1 Hotel Room)	\$1,035	\$1,235
2 Room Keaka Suite (2 Studios)	\$1,130	\$1,330
3 Room Keaka Suite (2 Studios & 1 Hotel Room)	\$1,600	\$1,900
3 Room Keaka Suite (3 Studios)	\$1,695	\$1,995
Beachfront Lahaina & Honolua	2023	2023-24 Holiday 12/20/23 -1/3/24
Studio	\$585	\$685
1 Bedroom Suite	\$820	\$1,020
Ocean Front Puna Point, Puna 2, Lani 1	2023	2023-24 Holiday 12/20/23 -1/3/24
Studio	\$695	\$795
1 Bedroom Suite	\$965	\$1,165
2 Bedroom Suite	\$1,500	\$1,800



# NAPILI KAI BEACH RESORT

## Resort & Room Amenities

- No Resort Fees
- Free Parking
- Large Private Lanais
- Kitchenette or Kitchen in Studios & Suites
- Compact Refrigerators & Microwaves in Hotel Rooms
- Daily Maid Service
- Blu-ray or DVD/CD Player
- Complimentary WiFi in All Rooms
- Complimentary WiFi & Internet Kiosk in Lobby
- ADA Accessible Rooms
- Coin Operated Laundry Facilities
- A/C & Ceiling Fans in All Rooms
- Coffee & Coffee Maker
- In-Room Safe
- Complimentary Portable Cribs
- Daily Cultural Demonstrations
- Concierge Services
- Full-Service Restaurant with Kids Eat Free Program
- Poolside Snack Bar
- Seasonal Children's Activities
- 18-Hole Adult Putting Green
- 9-Hole Children's Putting Green
- Fitness Center
- Meeting Facilities

---

### General Information

All rates subject to change without notice. Specific building, location, floor, or room number, are not guaranteed. A Premium of \$350 for a hotel room or studio, or \$450 for a suite will guarantee specific building, location, floor, or room number. Premiums are payable in advance, are non-commissionable, non-refundable, non-transferable and will not be applied as a deposit against the daily room rate. Specific building, location, floor, or room number will be a preference only, not guaranteed and based on availability at check-in unless a Premium is paid. Some rooms are privately owned and are not eligible for premium payment until 90 days prior to guest departure date. ADA rooms are available.

### Reservations

Contact our In-house Reservations Department 800-367-5030, visit our website [www.napilikai.com](http://www.napilikai.com) or contact your travel agent.

### Deposit Policy

A two-night deposit is required upon booking. A 14-day notice prior to arrival date is required for revisions and cancellations. Less than 14 days' notice will be subject to forfeiture of two nights' deposit. Reservations for 4 weeks and longer require 7 nights' deposit and a 30-day cancellation/revision notice. Notice of less than 30 days will be subject to 7 night forfeiture of deposit. Family and group deposit policies for 5 or more units will differ.

**Christmas Policy:** A minimum stay of 7 nights is required for any stay inside the designated Christmas period. Shorter stays may be requested after September 1st, if space is available. A 7-night deposit is due upon booking. All payments are non-refundable after September 1st.