



NAPILI KAI
BEACH RESORT





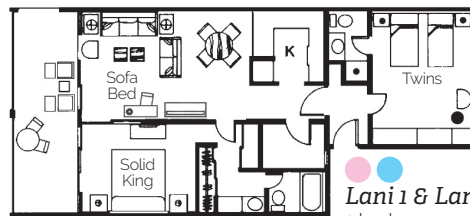
Studio 1 room, 1 bath, kitchen
450 - 680 sqft



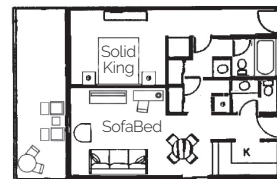
Honolua 1 bedroom, 1 bath, kitchen
Lahaina similar 575 - 685 sqft



Aloha & Puna 1 bedroom, 2 bath, kitchen
830 - 870 sqft



Lani 1 & Lani 2
2 bedroom,
2 bath, kitchen
1560 sqft



Lani 1
Lani 2
1 bedroom, 2 bath,
kitchen 960 sqft

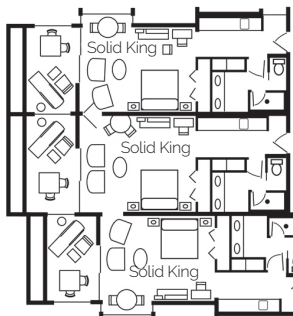
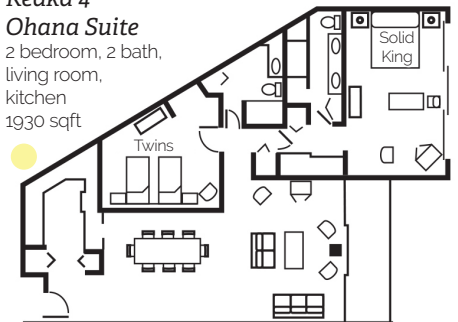


Puna Point 1 bedroom, 2 bath, kitchen 865 sqft

Keaka 4

Ohana Suite

2 bedroom, 2 bath,
living room,
kitchen
1930 sqft



Keaka 3 bedroom,
3 bath, living room,
kitchen 2040 sqft

Note: Can also be sold as a 2 room, 2 bath suite with kitchen or as a studio or as a single family studio.

Note: Floor plans not to scale. Square footage includes lanai and is approximate.
Color legend matches rate sheet insert

2019 Room Rates

Garden View Keaka 4	2018-19 Holiday (12/15/18 - 1/6/19)	2019	2019-20 Holiday (12/15/19 - 1/6/20)
Hotel Room	\$435	\$335	\$435
Family Studio	\$500	\$410	\$510
2 Room Keaka Suite (2 Hotel Rooms)	\$870	\$670	\$870
2 Room Keaka Suite (1 Studio & 1 Hotel Room)	\$935	\$745	\$945
2 Room Keaka Suite (2 Studios)	\$1,000	\$820	\$1,020
3 Room Keaka Suite (2 Hotels & 1 Studio)	\$1,370	\$1,080	\$1,380
3 Room Keaka 4 Suite (1 Hotel & 2 Studios)	\$1,435	\$1,155	\$1,455
Ohana Suite	\$1,350	\$1,070	\$1,370

Ocean View Aloha, Lani 2, Keaka 1, 2, 3	2018-19 Holiday (12/15/18 - 1/6/19)	2019	2019-20 Holiday (12/15/19 - 1/6/20)
Hotel Room	\$525	\$425	\$525
Studio	\$545	\$455	\$555
Family Studio	\$575	\$485	\$585
1 Bedroom Suite	\$875	\$690	\$890
2 Bedroom Suite	\$1,255	\$975	\$1,275
2 Room Keaka Suite (1 Studio & 1 Hotel Room)	\$1,100	\$910	\$1,110
2 Room Keaka Suite (2 Studios)	\$1,150	\$970	\$1,170
3 Room Keaka Suite (2 Studios & 1 Hotel Room)	\$1,675	\$1,395	\$1,695
3 Room Keaka 4 Suite (3 Studios)	\$1,725	\$1,455	\$1,755

Beachfront Lahaina & Honolua	2018-19 Holiday (12/15/18 - 1/6/19)	2019	2019-20 Holiday (12/15/19 - 1/6/20)
Studio	\$595	\$500	\$600
1 Bedroom Suite	\$925	\$735	\$935

Ocean Front Puna Point, Puna 2, Lani 1	2018-19 Holiday (12/15/18 - 1/6/19)	2019	2019-20 Holiday (12/15/19 - 1/6/20)
Studio	\$695	\$605	\$705
1 Bedroom Suite	\$980	\$795	\$995
2 Bedroom Suite	\$1,550	\$1,275	\$1,575



NAPILI KAI BEACH RESORT

Resort & Room Amenities

- No Resort Fees
- Free Parking
- Large Private Lanais
- ADA Accessible Rooms
- Kitchenette or Kitchen in Studios & Suites
- Compact Refrigerators in Hotel Rooms
- Daily Maid Service
- Blu-ray or DVD/CD Player
- Complimentary WiFi in All Rooms
- WiFi & Internet Kiosk in Lobby
- Coin Operated Laundry Facilities
- A/C & Ceiling Fan in All Rooms
- Coffee & Coffee Maker
- In-Room Safe
- Complimentary Portable Cribs
- Daily Cultural Demonstrations
- Concierge Services
- Full-Service Restaurant with Kids Eat Free Program
- Poolside Snack Bar
- Seasonal Children's Activities
- 18-Hole Adult Putting Green
- 9-Hole Children's Putting Green
- Fitness Center
- Meeting Facilities

General Information

All rates subject to change without notice. Specific building, location, floor, or room number, are not guaranteed. A Premium of \$350 for a hotel room or studio, or \$450 for a suite will guarantee specific building, location, floor, or room number. Premiums are payable in advance, are non-commissionable, non-refundable, non-transferable and will not be applied as a deposit against the daily room rate. Specific building, location, floor, or room number will be a preference only, not guaranteed and based on availability at check-in unless a Premium is paid. ADA rooms are available.

Reservations

Contact our In-house Reservations Department 800-367-5030, visit our website www.napilikai.com or contact your travel agent.

Deposit Policy

A two-night deposit is required upon booking. A 14-day notice prior to arrival date is required for revisions and cancellations. Less than 14 days' notice will be subject to forfeiture of two nights' deposit. Reservations for 4 weeks and longer require 7 nights' deposit and a 30-day cancellation/revision notice. Notice of less than 30 days will be subject to 7 night forfeiture of deposit. Family and group deposit policies for 5 or more units will differ.

Christmas Policy: A minimum stay of 7 nights is required for any stay inside the designated Christmas period. Shorter stays may be requested after September 1st, if space is available. A 7-night deposit is due upon booking. All payments are non-refundable after September 1st.