



NAPILI KAI  
BEACH RESORT



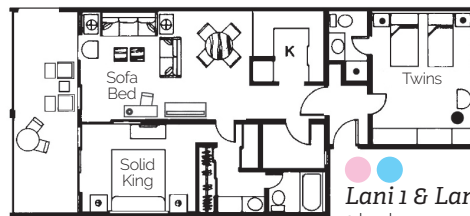
**Studio** 1 room, 1 bath, kitchen  
450 - 680 sqft



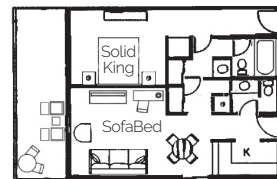
**Honolulu** 1 bedroom, 1 bath, kitchen  
**Lahaina similar** 575 - 685 sqft



**Aloha & Puna** 1 bedroom, 2 bath, kitchen  
830 - 870 sqft



**Lani 1 & Lani 2**  
2 bedroom,  
2 bath, kitchen  
1560 sqft



**Lani 1**  
**Lani 2**  
1 bedroom, 2 bath,  
kitchen 960 sqft

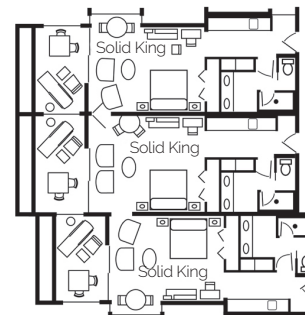
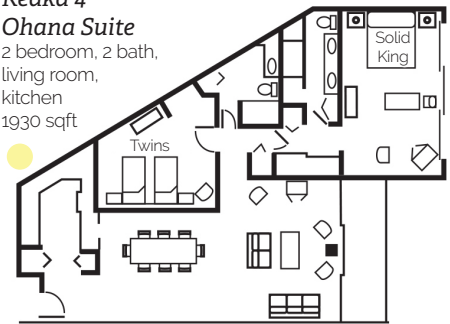


**Puna Point** 1 bedroom, 2 bath, kitchen 865 sqft

### Keaka 4

#### Ohana Suite

2 bedroom, 2 bath,  
living room,  
kitchen  
1930 sqft



**Keaka** 3 bedroom,  
3 bath, living room,  
kitchen 2040 sqft

Note: Can also be sold  
as a 2 room, 2 bath  
suite with kitchen or as  
a studio or as a single  
family studio.

Note: Floor plans not to scale. Square footage includes lanai and is approximate.

Color legend matches rate sheet insert

# 2021 Room Rates

<b>Garden View Keaka 4</b>	<b>2021 1/4/21 - 12/19/21</b>	<b>2021-22 Holiday 12/20/21 - 1/3/22</b>
Hotel Room	\$340	\$440
Family Studio	\$415	\$515
2 Room Keaka Suite (1 Family Studio & 1 Hotel Room)	\$755	\$955
2 Room Keaka Suite (2 Family Studios)	\$830	\$1,030
3 Room Keaka Suite (2 Hotels & 1 Family Studio)	\$1,095	\$1,395
3 Room Keaka 4 Suite (1 Hotel & 2 Family Studios)	\$1,170	\$1,470
Ohana Suite	\$1,125	\$1,425

<b>Ocean View Aloha, Lani 2, Keaka 1, 2, 3</b>	<b>2021 1/4/21 - 12/19/21</b>	<b>2021-22 Holiday 12/20/21 - 1/3/22</b>
Hotel Room	\$430	\$530
Studio	\$465	\$565
Family Studio	\$495	\$595
1 Bedroom Suite	\$705	\$905
2 Bedroom Suite	\$995	\$1,295
2 Room Keaka Suite (1 Family Studio & 1 Hotel Room)	\$925	\$1,125
2 Room Keaka Suite (2 Family Studios)	\$990	\$1,190
3 Room Keaka Suite (2 Family Studios & 1 Hotel Room)	\$1,420	\$1,720
3 Room Keaka 4 Suite (3 Family Studios)	\$1,485	\$1,785

<b>Beachfront Lahaina &amp; Honolua</b>	<b>2021 1/4/21 - 12/19/21</b>	<b>2021-22 Holiday 12/20/21 - 1/3/22</b>
Studio	\$515	\$615
1 Bedroom Suite	\$750	\$950

<b>Ocean Front Puna Point, Puna 2, Lani 1</b>	<b>2021 1/4/21 - 12/19/21</b>	<b>2021-22 Holiday 12/20/21 - 1/3/22</b>
Studio	\$635	\$735
1 Bedroom Suite	\$835	\$1,035
2 Bedroom Suite	\$1,325	\$1,625



# NAPILI KAI BEACH RESORT

## *Resort & Room Amenities*

- No Resort Fees
- Free Parking
- Large Private Lanais
- ADA Accessible Rooms
- Kitchenette or Kitchen in Studios & Suites
- Compact Refrigerators in Hotel Rooms
- Daily Maid Service
- Blu-ray or DVD/CD Player
- Complimentary WiFi in All Rooms
- WiFi & Internet Kiosk in Lobby
- Coin Operated Laundry Facilities
- A/C & Ceiling Fan in All Rooms
- Coffee & Coffee Maker
- In-Room Safe
- Complimentary Portable Cribs
- Daily Cultural Demonstrations
- Concierge Services
- Full-Service Restaurant with Kids Eat Free Program
- Poolside Snack Bar
- Seasonal Children's Activities
- 18-Hole Adult Putting Green
- 9-Hole Children's Putting Green
- Fitness Center
- Meeting Facilities

### ***General Information***

All rates subject to change without notice. Specific building, location, floor, or room number, are not guaranteed. A Premium of \$350 for a hotel room or studio, or \$450 for a suite will guarantee specific building, location, floor, or room number. Premiums are payable in advance, are non-commissionable, non-refundable, non-transferable and will not be applied as a deposit against the daily room rate. Specific building, location, floor, or room number will be a preference only, not guaranteed and based on availability at check-in unless a Premium is paid. Some units are privately owned and may be removed from inventory for periods of time for personal owner use. ADA rooms are available.

### ***Reservations***

Contact our In-house Reservations Department 800-367-5030, visit our website [www.napilikai.com](http://www.napilikai.com) or contact your travel agent.

### ***Deposit Policy***

A two-night deposit is required upon booking. A 14-day notice prior to arrival date is required for revisions and cancellations. Less than 14 days' notice will be subject to forfeiture of two nights' deposit. Reservations for 4 weeks and longer require 7 nights' deposit and a 30-day cancellation/revision notice. Notice of less than 30 days will be subject to 7 night forfeiture of deposit. Family and group deposit policies for 5 or more units will differ. Cancellation policy may vary pending the pandemic and testing protocols.

**Christmas Policy:** A minimum stay of 7 nights is required for any stay inside the designated Christmas period. Shorter stays may be requested after September 1st, if space is available. A 7-night deposit is due upon booking. All payments are non-refundable 120 days prior to the date of arrival.