



Located on ten secluded acres... the hardest thing you will ever have to do is leave.



Reservations

Contact our Reservations Department on Maui, visit our website to book online or call your Travel Agent.

**TOLL FREE USA and CANADA
800-367-5030**

Monday - Friday
7:00am - 4:30pm Hawaii Time

Saturday - Sunday
7:00am - 2:00pm Hawaii Time

Email: stay@napilikai.com

View our webcam:
www.napilikai.com

5900 Lower Honoapiilani Road
Lahaina, Hawaii 96761
808.669.6271





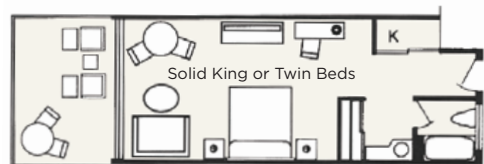
RESORT LEGEND

- Restaurant
- Parking Lot
- BBQ
- Smoking Area



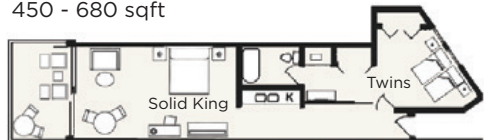
No Drones

All Rooms, Lanais & Buildings are Non-Smoking

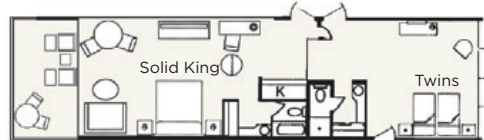


Studio

Studio 1 room, 1 bath, kitchen
450 - 680 sqft



Honolua 1 bedroom, 1 bath, kitchen
Lahaina similar 575 - 685 sqft

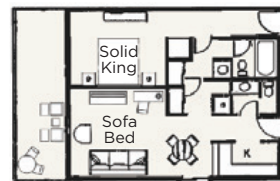


Aloha & Puna 2 1 bedroom, 2 bath,
kitchen • 830 - 870 sqft



Lani 1 & Lani 2

2 bedroom, 2 bath,
kitchen • 1560 sqft



Lani 1, Lani 2

1 bedroom, 2 bath,
kitchen • 960 sqft

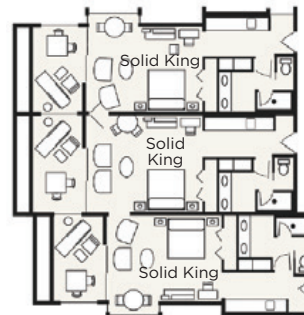
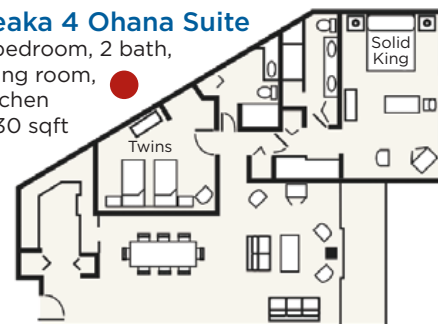


Puna Point 1 bedroom, 2 bath, kitchen • 865 sqft



Keaka 4 Ohana Suite

2 bedroom, 2 bath,
living room,
kitchen
1930 sqft



Keaka 3 3 room,
3 bath, living room,
kitchen • 2040 sqft

Note: Can also
be sold as a 2
room, 2 bath suite
with kitchen or
as a single family
studio.

Note: Floor plans not to scale. Square footage includes lanai and is approximate. Color legend matches rate sheet insert.

2021 • 2022 Room Rates

Garden View Keaka 4	2021	2022	2022-23 Holiday 12/20/22 -1/3/23
Hotel Room	\$340	\$355	\$455
Family Studio	\$415	\$435	\$535
2 Room Keaka Suite (2 Hotel Rooms)	\$680	\$710	\$910
2 Room Keaka Suite (1 Studio & 1 Hotel Room)	\$755	\$790	\$990
2 Room Keaka Suite (2 Studios)	\$830	\$870	\$1,070
3 Room Keaka Suite (2 Hotels & 1 Studio)	\$1,095	\$1,145	\$1,445
3 Room Keaka 4 Suite (1 Hotel & 2 Studios)	\$1,170	\$1,225	\$1,525
Ohana Suite (2 Bedroom)	\$1,125	\$1,185	\$1,485
Ocean View Aloha, Lani 2, Keaka 1, 2 & 3	2021	2022	2022-23 Holiday 12/20/22 -1/3/23
Hotel Room	\$430	\$450	\$550
Studio	\$465	\$485	\$585
Family Studio	\$495	\$520	\$620
1 Bedroom Suite	\$705	\$740	\$940
2 Bedroom Suite	\$995	\$1,045	\$1,345
2 Room Keaka Suite (1 Studio & 1 Hotel Room)	\$925	\$970	\$1,170
2 Room Keaka Suite (2 Studios)	\$990	\$1,040	\$1,240
3 Room Keaka Suite (2 Studios & 1 Hotel Room)	\$1,420	\$1,490	\$1,790
3 Room Keaka 4 Suite (3 Studios)	\$1,485	\$1,560	\$1,860
Beachfront Lahaina & Honolua	2021	2022	2022-23 Holiday 12/20/22 -1/3/23
Studio	\$515	\$540	\$640
1 Bedroom Suite	\$750	\$785	\$1,085
Ocean Front Puna Point, Puna 2, Lani 1	2021	2022	2022-23 Holiday 12/20/22 -1/3/23
Studio	\$635	\$665	\$765
1 Bedroom Suite	\$835	\$875	\$1,075
2 Bedroom Suite	\$1,325	\$1,395	\$1,695



NAPILI KAI BEACH RESORT

Resort & Room Amenities

- No Resort Fees
- Free Parking
- Large Private Lanais
- Kitchenette or Kitchen in Studios & Suites
- Compact Refrigerators in Hotel Rooms
- Daily Maid Service
- Blu-ray or DVD/CD Player
- Complimentary WiFi in All Rooms
- Complimentary WiFi & Internet Kiosk in Lobby
- ADA Accessible Rooms
- Coin Operated Laundry Facilities
- A/C & Ceiling Fans in All Rooms
- Coffee & Coffee Maker
- In-Room Safe
- Complimentary Portable Cribs
- Daily Cultural Demonstrations
- Concierge Services
- Full-Service Restaurant with Kids Eat Free Program
- Poolside Snack Bar
- Seasonal Children's Activities
- 18-Hole Adult Putting Green
- 9-Hole Children's Putting Green
- Fitness Center
- Meeting Facilities

General Information

All rates subject to change without notice. Specific building, location, floor, or room number, are not guaranteed. A Premium of \$350 for a hotel room or studio, or \$450 for a suite will guarantee specific building, location, floor, or room number. Premiums are payable in advance, are non-commissionable, non-refundable, non-transferable and will not be applied as a deposit against the daily room rate. Specific building, location, floor, or room number will be a preference only, not guaranteed and based on availability at check-in unless a Premium is paid. Some rooms are privately owned and are not eligible for premium payment until 90 days prior to guest departure date. ADA rooms are available.

Reservations

Contact our In-house Reservations Department 800-367-5030, visit our website www.napilikai.com or contact your travel agent.

Deposit Policy

A two-night deposit is required upon booking. A 14-day notice prior to arrival date is required for revisions and cancellations. Less than 14 days' notice will be subject to forfeiture of two nights' deposit. Reservations for 4 weeks and longer require 7 nights' deposit and a 30-day cancellation/revision notice. Notice of less than 30 days will be subject to 7 night forfeiture of deposit. Family and group deposit policies for 5 or more units will differ.

Christmas Policy: A minimum stay of 7 nights is required for any stay inside the designated Christmas period. Shorter stays may be requested after September 1st, if space is available. A 7-night deposit is due upon booking. All payments are non-refundable after September 1st.